



ANNIVERSARY 16763S



ANNIVERSARY 16763S

Model number:

3 beds • 2 baths • 1080 sq.ft. • 16' width • 76' depth

Our home building facilities invest in continuous product and process improvements. Plans, dimensions, features, materials, specifications and availability are subject to change without notice or obligation. Renderings and floor plans are representative likenesses of our homes and may differ from the actual homes. We invite you to tour a Home Center near you and inspect the highest value in quality housing available or call (928) 636-9843 to speak with a Home Consultant. Copyright 2017, CMH. All rights reserved.

<https://www.clayton1stop.com>

CLAYTON HOMES-CHINO VALLEY

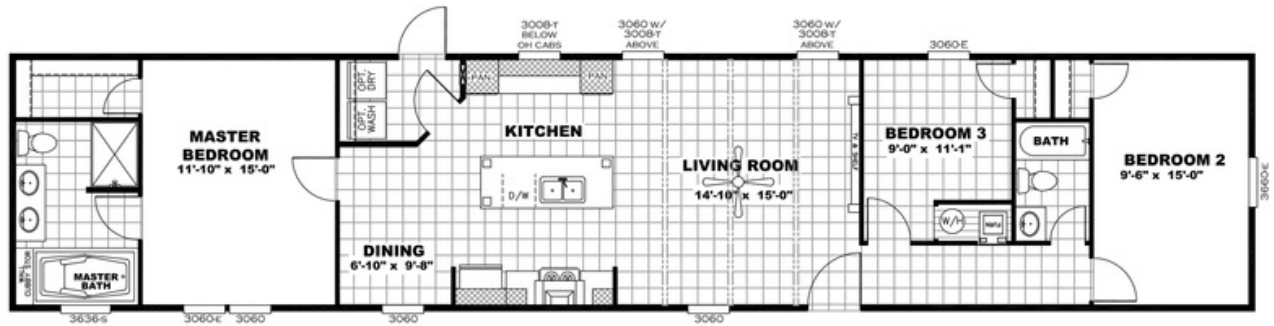
325 WEST INDUSTRIAL WAY
CHINO VALLEY, AZ 86323

Monday - Thursday: 9am - 5:30pm
Friday: 9am - 5:30pm
Saturday: 9am - 5pm
Sunday: Closed

(928) 636-9843



ANNIVERSARY 16763S



MODEL# ANN16763SH

DRAWING # 31-76S-TXANN

ALL WINDOWS ARE THERMAL PANE

ANNIVERSARY 16763S

Model number:

3 beds • 2 baths • 1080 sq.ft. • 16' width • 76' depth

Our home building facilities invest in continuous product and process improvements. Plans, dimensions, features, materials, specifications and availability are subject to change without notice or obligation. Renderings and floor plans are representative likenesses of our homes and may differ from the actual homes. We invite you to tour a Home Center near you and inspect the highest value in quality housing available or call (928) 636-9843 to speak with a Home Consultant. Copyright 2017, CMH. All rights reserved.

<https://www.clayton1stop.com>

CLAYTON HOMES-CHINO VALLEY

325 WEST INDUSTRIAL WAY
CHINO VALLEY, AZ 86323

Monday - Thursday: 9am - 5:30pm
Friday: 9am - 5:30pm
Saturday: 9am - 5pm
Sunday: Closed

(928) 636-9843